



she®

WELCOME TO THE WORLD OF **SHE PROFESSIONALS**



## *SHE hair professional extensions*

SHE company is widely recognized as an industry leader for providing state-of-the-art technology, advanced application techniques and superior products in the extension market.

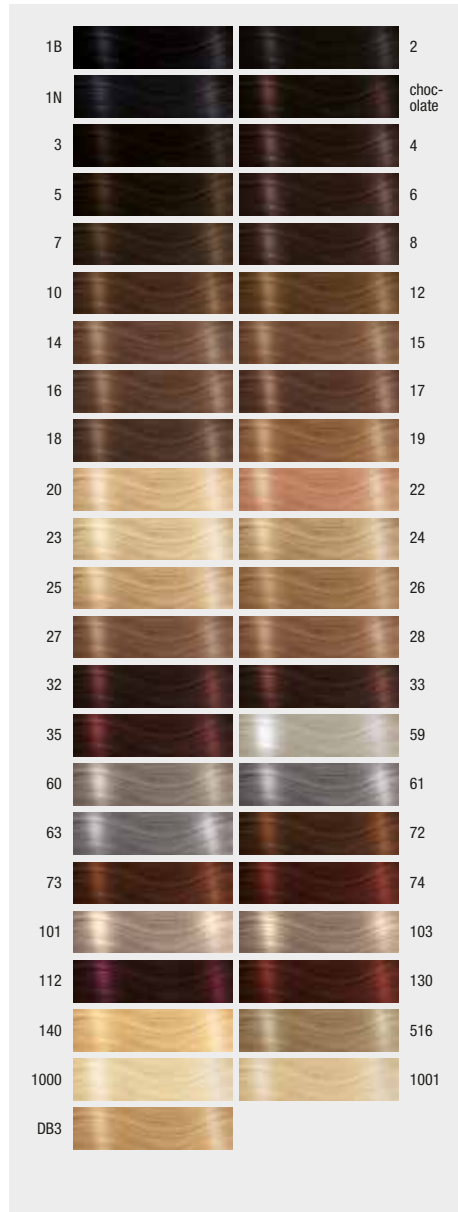
Since 1995 SHE company is the best in the field of hair cosmetics professionals, thanks to the excellent quality of its products that have guaranteed the success over the years. The company offers a variety of hair extension application systems using only 100% natural hair. SHE is pleased to present her new collection: Colors of seduction featuring 102 "color effects". The new techniques of Rooted color, Balayage, Ombre and Shatush give the possibility to countless combinations and free the creativity of every professional.

Become part of the SHE world and you will feel like a star, with SHE products you will see the difference!

**she**<sup>®</sup>  
PROFESSIONALS



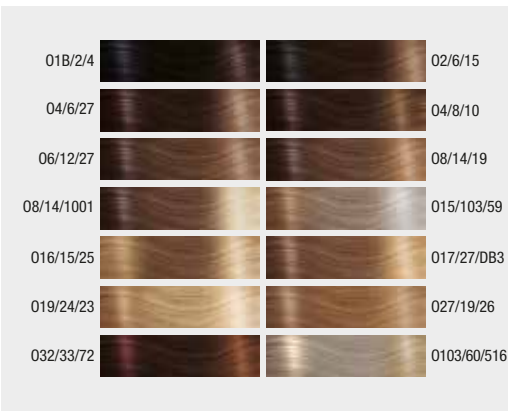
**natural color** NATURAL COLORS  
AVAILABLE IN 45 COLORS



**balayage effect** BALAYAGE COLORS  
AVAILABLE IN 15 COLORS



**ombre effect** OMBRE COLORS  
AVAILABLE IN 14 COLORS



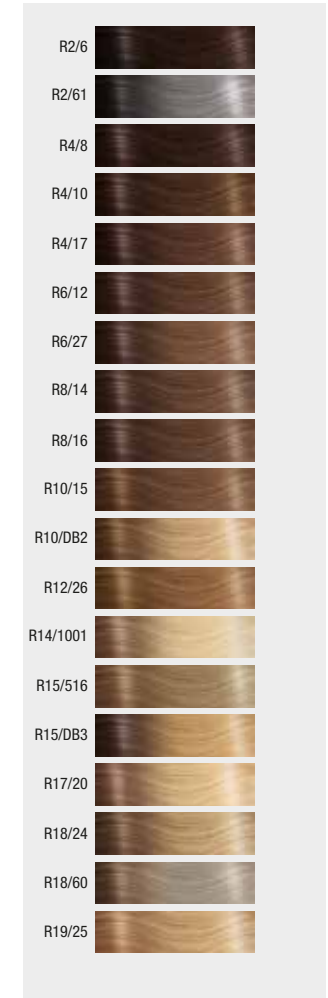
**shatush effect** SHATUSH COLORS  
AVAILABLE IN 17 COLORS



**fantasy color** FANTASY COLORS  
AVAILABLE IN 24 COLORS



**rooted color** ROOTED COLORS  
AVAILABLE IN 19 COLORS



## SHE hair professional fashion tape extensions

/ latest application technique available on the market today

/ Fashion Tape's technology is the latest trend in the hair extension market – and easy to learn

/ full head of extensions in just a few minutes with flawless results

/ color-effects for endless creative possibilities



### FASHION TAPE - basic

Pack: 10 pcs per pack  
Weight: 7-8 g per pack  
Apply: tape



### FASHION TAPE - structure and length

Straight hair: 45/50 cm

### FASHION TAPE - colors



NATURAL



ROOTED



OMBRE



BALAYAGE



FASHION  
ION  
tape





**45/50 CM - STRAIGHT HAIR**

art.nr: 60154 (FTX1011)

Color: Chocolate, 1B, 1N, 2, 3, 4, 5, 6, 7, 8, 10, 12, 14, 15, 16, 17, 18, 19, 20, 22, 23, 24, 25, 26, 27, 28, 32, 35, 59, 60, 61, 72, 73, 74, 101, 103, 112, 130, 140, 516, 1000, 1001.



**45/50 CM - STRAIGHT HAIR**

art.nr: 60169 (FXT1031)

Color: R2/6, R2/61, R4/8, R4/10, R4/17, R6/12, R6/27, R8/14, R8/16, R10/15, R10/DB2, R12/26, R14/1001, R15/516, R15/DB3, R17/20, R18/24, R18/60, R19/25.



**45/50 CM - STRAIGHT HAIR**

art.nr: 60167 (FTX1027)

Color: O1B/2/4, O2/6/15, O4/8/10, O4/6/27, O6/12/27, O8/14/19, O8/14/1001, O15/103/59, O16/15/25, O17/27/DB3, O19/24/23, O27/19/26, O32/33/72, O103/60/51.



**45/50 CM - STRAIGHT HAIR**

art.nr: 60168 (FTX1023)

Color: B2/61, B4/8, B4/17, B6/12, B6/27, B8/26, B10/DB2, B12/26, B14/1001, B15/516, B17/20, B18/24, B18/60, B32/130, BDB3/20.

# SHE hair professional keratin system extensions

/ comes in three different structures  
/ you can separate the keratine base, to create smaller pieces  
/ you can create any hairstyle you wish, which gives maximal flexibility for the customer



## KERATIN SYSTEM - info

Pack: 10 pcs per pack  
Weight: 7-8 g per pack  
Apply: tool to apply keratine extensions



## KERATIN SYSTEM - structure and length

Comes in three different structures - straight, wavy and curly

Straight: 40/45 cm, 55/60 cm, 65/70 cm  
Wavy: 55/60 cm  
Curly: 55/60 cm

## KERATIN SYSTEM - colors



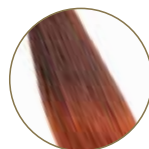
NATURAL



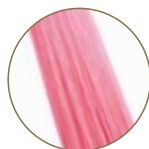
OMBRE



BALAYAGE



SHATUSH



FANTASY







**40/45 CM - STRAIGHT HAIR**

art.nr: 60138 (SHE 8001LC)

Color: 1B, 1N, 2, 4, 6, 8, 10, 12, 14, 15, 16, 17, 18, 19, 20, 22, 23, 24, 25, 26, 27, 28, 29, 30, 32, 33, 35, 59, 60, 61, 63, 72, 73, 74, 101, 112, 140, 516, 530, 1000, 1001, DB3, 2/17, 6/12, 6/27, 8/26, 12/26, 14/1001, 15/516, 18/24, 32/130, 20/27, 33/21.

**55/60 CM - STRAIGHT HAIR**

art.nr: 60135 (SHE 8000L)

Color: chocolate, 1B, 1N, 2, 3, 4, 5, 6, 7, 8, 10, 12, 14, 15, 16, 17, 18, 19, 20, 22, 23, 24, 25, 26, 27, 28, 29, 30, 32, 33, 35, 59, 60, 61, 63, 72, 73, 74, 101, 112, 140, 516, 530, 1000, 1001, DB3, 8/26, 2/17, 6/12, 6/27, 12/26, 14/1001, 15/516, 18/24, 32/130, 20/27, 33/21.

**65/70 CM - STRAIGHT HAIR**

art.nr: 60139 (SHE 8010XXL)

Color: 1B, 2, 4, 6, 8, 12, 17, 20, 26, 27, 32, 33, 35, 130, 1001.

**55/60 CM - WAVY HAIR**

art.nr: 60136 (SHE 8002M)

Color: 1B, 2, 4, 6, 8, 10, 12, 14, 15, 16, 17, 19, 20, 23, 24, 25, 26, 27, 28, 29, 30, 32, 33, 35, 59, 60, 61, 101, 140, 516, 530, 1000, 1001, DB3, 2/17, 6/12, 6/27, 8/26, 12/26, 14/1001, 15/516, 18/24, 20/27, 32/130, 33/21.

**55/60 CM - CURLY HAIR**

art.nr: 60137 (SHE 8004R)

Color: 1B, 2, 4, 6, 8, 10, 12, 14, 15, 16, 17, 19, 20, 24, 25, 26, 27, 28, 30, 32, 33, 35, DB3, 1001.



**55/60 CM - STRAIGHT HAIR**

art.nr: 60178 (SHE 8022OL)

Color: O1B/2/4, O2/16/15, O4/6/27, O6/12/27, O8/14/19, O8/14/1001, O15/103/59, O19/24/23, O32/33/72, O103/60/516.



**55/60 CM - STRAIGHT HAIR**

art.nr: 60177 (SHE 8012B)

Color: B2/6, B4/8, B4/17, B6/12, B6/27, B8/26, B10/DB2, B12/26, B14/1001, B15/516, B18/24, B18/60.



**55/60 CM - STRAIGHT HAIR**

art.nr: 60122 (SHE 8007D)

Color: T1N/bordeaux, T2/60, T2/61, T4/17, T6/12, T6/27, T8/26, T10/DB2, T12/26, T14/1001, T15/516, T17/20, T18/24, T18/60, T32/130.



**55/60 CM - STRAIGHT HAIR**

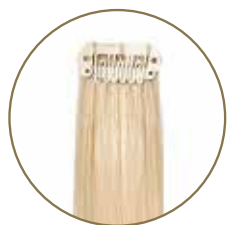
art.nr: 60121 (SHE 8006F)

Color: blue, dark blue, sky, turquoise, acid green, violet, new purple, medium violet, reddish violet, lilac, pink, dark pink, purplish pink, fuxia, dark fuxia, red, dark red, bordeaux.



## SHE hair professional clip-in system extensions

- / creates a quick and easy change in length and volume
- / use only a few pieces for a color effect
- / an easy system without permanent attachment
- / you can create any hairstyle you wish, which gives maximal flexibility for the customer



### CLIP-IN SYSTEM - info

**Pack:** see different products  
**Weight:** depending on size  
**Apply:** hairloc clips



### CLIP-IN SYSTEM - sizes

Comes in two different lengths and different sizes - see next page

**Straight:** 40/45 cm, 50/55 cm

### CLIP-IN SYSTEM - colors



NATURAL



FANTASY







#### 40/45 CM - STRAIGHT HAIR

##### EXTENCLIP

art.nr: 60051

Contains: 9 pieces - 1 x 23 cm, 1 x 20 cm, 1 x 16 cm, 2 x 10 cm, 4 x 3 cm.

Weight: 110 g.

Color: 1B, 2, 4, 6, 8, 10, 12, 14, 15, 16, 17, 19, 20, 24, 25, 26, 27, 28, 30, 32, 33, 130, 140, 516, DB2, DB3, DB4, 60, 1000, 1001, 8/26, 6/12, 6/27, 12/26, 14/1001, 18/24, 20/27, DB3/20, 32/130.

#### 40/45 CM - STRAIGHT HAIR

##### ONE CLIP

art.nr: 60162

Contains: 1 piece, 1 x 2,5 cm.

Weight: 5 g.

Color: 1B, 2, 4, 6, 8, 14, 17, 20, 24, 25, 27, 1000, 1001.

#### 50/55 CM - STRAIGHT HAIR

##### DONNA

art.nr: 60053

Contains: 1 piece, 1 x 16 cm, thread for application.

Weight: 100 g.

Color: 1B, 2, 4, 6, 8, 10, 12, 14, 17, 20, 24, 26, 27, 32, 33, 35, 130, 1001, DB3, 8/26, 6/12, 6/27, 12/26, 14/1001, 18/24, 20/27, DB3/20, 32/130.



#### 50/55 CM - STRAIGHT HAIR

##### EASY ONE CLIP

art.nr: 60160

Contains: 1 piece, 1 x 16 cm.

Weight: 27 g.

Color: 1B, 2, 4, 6, 8, 14, 17, 20, 24, 27, 1000, 1001, DB2.

#### 50/55 CM - STRAIGHT HAIR

##### EASY LONG HAIR

art.nr: 60055

Contains: 5 pieces - 1 x 20 cm, 1 x 18 cm, 1 x 16 cm, 2 x 10 cm.

Weight: 75 g.

Color: 1B, 2, 4, 6, 8, 10, 12, 14, 17, 20, 24, 26, 27, 32, 33, 130, DB3, 1001, 6/12, 6/27, 8/26, 12/26, 14/1001, 18/24, 20/27, 32/130, DB3/20.

#### 40/45 CM - STRAIGHT HAIR

##### ONE CLIP

art.nr: 60163

Contains: 1 piece, 1 x 2,5 cm.

Weight: 5 g.

Color: yellow, orange, dark orange, blue, dark blue, sky, turquoise, acid green, dark green, violet, new purple, medium violet, reddish violet, lilac, pink, dark pink, purplish pink, fuxia, dark fuxia, red, dark red.



## SHE hair professional weft system extensions

- / flexibel application system - using clips, weaving or glue
- / use without application as a complement or to fill out hairstyle
- / cut easily in requested pieces
- / comes in two differents lenghts and structures in a variety of colors



### WEFT SYSTEM - info

Pack: 1 pcs per pack  
Weight: 100 g per pack  
Apply: your choice - hairloc, weaving or adhesives

STRAIGHT



WAVY



### WEFT SYSTEM - structure and lengths

Comes in three different structures - straight, wavy and curly

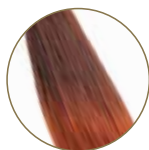
Straigh: 40/45 cm, 50/60 cm

Wavy: 50/60 cm

### WEFT SYSTEM - colors



NATURAL



SHATUSH



weft  
hair





**40/45 CM - STRAIGHT HAIR**

art.nr: 60045

Color: 1B, 2, 4, 6, 8, 10, 12, 14, 15, 16, 17, 19, 20, 21, 23, 24, 25, 26, 27, 28, 29, 30, 32, 33, 35, 59, 60, 61, 101, 103, 130, 140, 516, 530, 1000, 1001, DB2, DB3, DB4, 8/26, 18/24, 32/130, 20/27, 12/26, 21/130, 1B/530, 14/1001, 2/17, 6/12, 6/27, 32/530, 33/21, DB3/20.

**50/60 CM - STRAIGHT HAIR**

art.nr: 60032

Color: 1B, 2, 4, 6, 8, 10, 12, 14, 15, 16, 17, 19, 20, 21, 23, 24, 25, 26, 27, 28, 29, 30, 32, 33, 35, 59, 60, 61, 101, 103, 130, 140, 516, 530, 1000, 1001, DB2, DB3, DB4, 18/24, 32/130, 8/26, 14/1001, 12/26, 20/27, 6/27, DB3/20.

**50/60 CM - WAVY HAIR**

art.nr: 60040

Color: 1B, 2, 4, 6, 8, 10, 12, 14, 15, 16, 17, 19, 20, 21, 23, 24, 25, 26, 27, 28, 29, 30, 32, 33, 35, 59, 60, 61, 101, 103, 130, 140, 516, 530, 1000, 1001, DB2, DB3, DB4, 18/24, 32/130, 8/26, 14/1001, 12/26, 20/27, 6/27, DB3/20.



**50/60 CM - STRAIGHT HAIR**

art.nr: 60046

Color: T6/12, T6/27, T8/26, T10/DB2, T12/26, T14/1001, T17/20, T18/24, T27/20, T32/130.

## SHE hair professional tape extensive

/ latest application technique available on the market today

/ Fashion Tape 's technology is the latest trend in the hair extension market - and easy to learn

/ full head of extensions in just a few minutes with flawless results

/ color-effects for endless creative possibilities



### TAPE EXTENSIVE - info

Pack: 4cm - 4 pieces, 2cm - 8 pieces

Weight: 40/45 cm - 8 g/pcs,  
55/60 - 11 g/pcs

Apply: tape



### TAPE EXTENSIVE - structure and lengths

Straight: 40/45 cm, 55/60 cm

Size: 2 cm and 4 cm

### TAPE EXTENSIVE - colors



NATURAL



FANTASY



extensive<sup>®</sup>





**40/45 CM - 8 PIECES X 2 CM**

**STRAIGHT HAIR**

art.nr: 60151

Color: 1B, 2, 4, 6, 8, 10, 12, 14, 15, 16, 17, 19, 20, 21, 24, 25, 26, 27, 28, 29, 30, 32, 33, 35, 60, 101, 103, 130, 516, 530, 1000, 1001, DB2, DB3, DB4, M2 14/1001, M2 18/24, M2 20/27, M2 6/27, M2 32/130.

**40/45 CM - 4 PIECES X 4 CM**

**STRAIGHT HAIR**

art.nr: 60147

Color: 1B, 2, 4, 6, 8, 10, 12, 14, 15, 16, 17, 19, 20, 21, 24, 25, 26, 27, 28, 29, 30, 32, 33, 35, 60, 101, 103, 130, 516, 530, DB2, DB3, DB4, 1000, 1001, M4 14/1001, M4 18/24, M4 20/27, M4 32/130, M4 6/27.

**55/60 CM - 4 PIECES X 4 CM**

**STRAIGHT HAIR**

art.nr: 60143

Color: 1B, 2, 4, 6, 8, 10, 12, 14, 15, 16, 17, 19, 20, 21, 24, 25, 26, 27, 28, 29, 30, 32, 33, 35, 60, 101, 103, 130, 516, 530, DB2, DB3, DB4, 1000, 1001, M4 14/1001, M4 18/24, M4 20/27, M4 32/130, M4 6/27.



**40/45 CM - 4 PIECES X 4 CM**

**STRAIGHT HAIR**

art.nr: 60148

Color: blue, dark blue, sky, fuxia, lilac, new purple, pink, dark pink, puplish pink, red, dark red, turquoise, dark green, medium violet, violet.

**55/60 CM - 4 PIECES X 4 CM**

**STRAIGHT HAIR**

art.nr: 60144

Color: orange, blue, dark blue, sky, fuxia, lilac, new purple, pink, dark pink, purplish pink, red, dark red, turquoise, acid green, dark green, violet, medium violet, reddish violet.

## SHE hair professional pony tails



### PONY TAIL - info

**Pack:** 1 piece

**Apply:** use a small comb

**Advice:** place it high up, in the neck or on the side. Use the hair piece as it is, braid it, twist it or make a big twist. Depending on what hairstyle you wish.



### DIVA - 100% NATURAL - STRAIGHT HAIR

art.nr: 72242

Length: 50/55 cm.

Color: 2, 4, 6/12, 6, 8, 14/1001, 18/24, 19, 20, 20/27, 24, 25, 1001, DB3/20, 516, 60.



### DEA - SYNTHETIC - STRAIGHT HAIR

art.nr: 72240

Length: 50/55 cm.

Color: 1B, 2, 4, 6, 8, 10, 20, 22, 25, 32, 4/17, 15/25, 18/24, 20/27, 27/28, 32/130, 614/21.

### JANA - SYNTHETIC - WAVY HAIR

art.nr: 72241

Length: 55/60 cm.

Color: 1B, 2, 4, 6, 8, 10, 20, 22, 25, 32, 4/17, 15/25, 18/24, 20/27, 27/28, 32/130, 614/21.



1.



2.



3.



4.



5.



6.



7.



8.



9.

1. **TOOL TO APPLY KERATIN EXTENSIONS**  
art.nr: 91083

2. **PLASTIC SHIELDS FOR EXTENSIONS**  
Pack of 6 pieces.  
art.nr: 92160

3. **KERATIN TIPS**  
For application of extensions, pack of 25 pcs.  
art.nr: 60126

4. **PLIER TO REMOVE AND APPLY HAIREXTENSIONS**  
Useful for bothe removal and for applying.  
art.nr: 92168

5. **SOLVENT**  
To remove keratin extensions.  
**SOLGEL 100 ML** | art.nr: 91021  
**SOLVENT 90 ML** | art.nr: 80047

6. **WORK BAG**  
art.nr: 99030

7. **HAIR HOLDER**  
art.nr: 92209

8. **NYLON THREAD**  
Colors: blonde, lighth brown, dark brown.  
art.nr: 92325

9. **NEEDLES WEAVING**  
7 pieces. Different sizes.  
art.nr: 92398

## ACCESSORIES



# ACCESSORIES

## 1. HAIRLOC - MINI, MIDI AND MAXI

Colors: black, beige and brown.

**MAXI** 3,2 cm | art.nr: 92024

**MIDI** 2,8 cm | art.nr: 92025

**MINI** 2 cm | art.nr: 92026

## 2. MINI FLATTENING IRON

To apply tape hair.

art.nr: 90648

## 3. TAPE STRIPS

Adhesives strips.

**4 CM** | art.nr: 90603

**2 CM** | art.nr: 90664



1.



2.



3.



4.



5.



6.

## 4. SECTION DISCS

6 pieces.

art.nr: 90600

## 5. COLOR RING

100% natural hair.

art.nr: 99027

## 6. HAIR CLIPS

Metal, 24 pieces.

art.nr: 90607



1.



2.



4.



5.



6.



7.



8.

9.



10.

1. **REMOVER**  
art.nr: 90671

2. **TAPE**  
Adhesives strips for fashion tape-in basic.  
art.nr: 90669

3. **SINGLE TAPE**  
Single adhesives strips for fashion tape-in basic.  
art.nr: 93003

4. **BASE 25 | 33,5 x 29 cm**  
Base for fashion tape-ins re-use.  
art.nr: 93008

5. **EASY RAZOR**  
Black or orange.  
art.nr: 93006

6. **RZB02 | SPARE BLADES FOR EASY RAZOR**  
art.nr: 93007

7. **COLOR RING - FASHION TAPE**  
art.nr: 93007

8. **PROFESSIONAL RECTANGULAR BRUSH**  
Medium size, Wooden brush.  
art.nr: 93002

9. **PROFESSIONAL OVAL BRUSH**  
Small and Medium, Wooden brush.

**SMALL** | art.nr: 93001

**MEDIUM** | art.nr: 93000

10. **CAPE FASHION TAPE**  
art.nr: 93009



## FASHION CARE

is a MADE IN ITALY line of high professional cosmetics for hair. Born as a complement to SHE's extension collections and it is perfect for any use even at home.

The elegant design, with the unmistakable Italian style, characterizes the product, which also becomes an excellent complementary selling point for the salon.

FASHION CARE products have been designed to give beauty, wellbeing and professionalism.



1

2

3

### 1. NOURISHING MOISTURISING SHAMPOO | 250 ML

Gently cleanses hair, leaving it strong, soft, silky and shiny, for a hairstyle that looks perfect at all times.  
art.nr: 83002

### 2. RESTRUCTURING REGENERATING MASK | 250 ML

Nourishes hair deep down and instantly detangles, for a glamorous and radiant look.  
art.nr: 83003

### 3. INSTANT LEAVE-IN RESTRUCTURER | 150 ML

Nourishes and eliminates frizz and gives body to even the finest hair. Do not rinse.  
art.nr: 83004

*Salon products*



### 1. NOURISHING MOISTURISING SHAMPOO | 1000 ML

art.nr: 83005

### 2. RESTRUCTURING REGENERATING MASK | 500 ML

art.nr: 83006





# HAIR CARE



1. 4U SHAMPO | 250 ML  
art.nr: 80850
2. 4U CONDITIONER | 250 ML  
art.nr:80851
3. 4U EVERYDAY CONDITIONER | 125 ML  
art.nr: 80852
4. 4U SILK PROTEIN | 60 ML  
art.nr: 80856



5. ARGAN SHAMPOO  
250 ML AND 1000 ML  
250 ML | art.nr: 80861  
1000 ML | art.nr: 80866

6. ARGAN CONDITIONER  
250 ML AND 500 ML  
250 ML | art.nr: 80862  
500 ML | art.nr: 80867

7. ARGAN CREAM | 150 ML  
art.nr: 80863

8. ARGAN OIL | 30 ML AND 100 ML  
30 ML | art.nr: 80864  
100 ML | art.nr: 80868

9. ARGAN OIL SPRAY | 100 ML  
art.nr: 80865  
100 ML | art.nr: 80865



1. SHE BRUSH  
SMALL | ART.NR: 90630  
MEDIUM | ART.NR: 90631  
LARGE | ART.NR: 90632
2. SHE PADEL BRUSH  
ART.NR: 92187
3. EXTENSIONS BRUSH  
ART.NR: 92159
4. EXTENSIONS BRUSH  
ART.NR: 92015
5. SHE EXTENSIONS BRUSH  
SMALL | ART.NR: 92180  
LARGE | ART.NR: 92163



# BRUSHES

# she®



Toupémas  
Belgal  
by **Aderans**

---

020-36 87 00 | INFO@TOUPEMABELGAL.SE |  |  | TOUPEMABELGAL.SE | WEBSHOP



Carl M. Lundh  
CARL M. LUNDH  
by **Aderans**

---

78 77 05 46 | INFO@CARLMLUNDH.DK |  |  | CARLMLUNDH.DK

Carl M. Lundh  
CARL M. LUNDH  
by **Aderans**

---

219 39 620 | INFO@CARLMLUNDH.NO |  |  | CARLMLUNDH.NO